

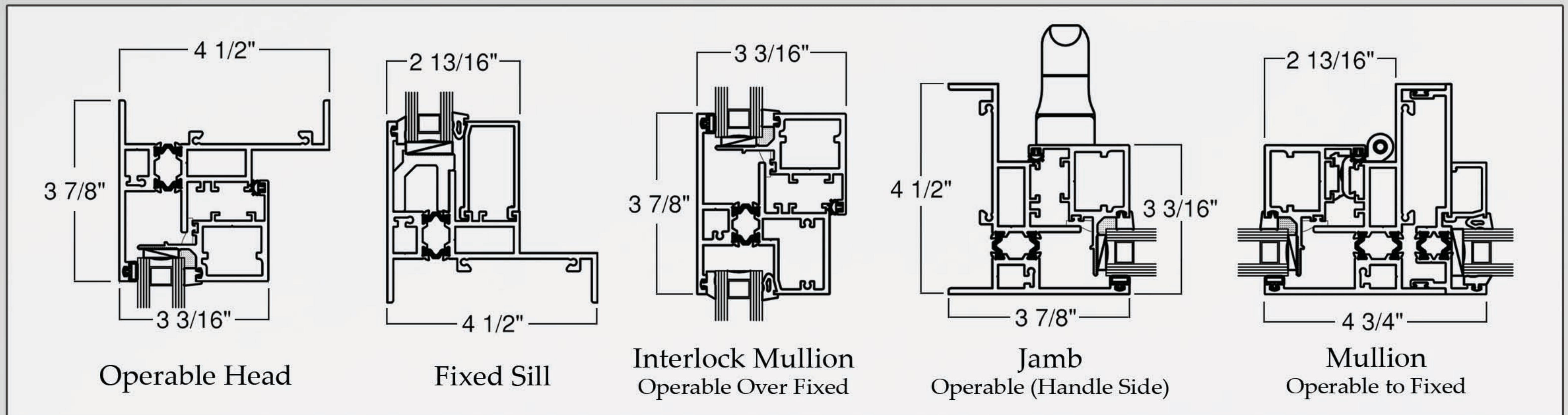


WINDOW AND DOOR

8000/8000N Series

Casement/Hopper Window Wall

The 8000 Window Wall is an I-Strut thermally-broken window featuring a 4 1/2" frame. Champion's 8000 is available with fixed and inswing-casement/projected units, all of which have equal sightlines. The 8000 window wall system has structurally glazed sashes and a pressure-equalized design, both contributing to its performance. To easily connect units, Champion's window wall has the ability to utilize male-female mullions that minimize frame size at the connection. This window was designed with the ability to use structural steel inserts to strengthen units taller than the standard 9.5 foot application. Champion offers a receptor system to integrate the connection of the window wall for slab to slab applications. Champion's 8000N offers the same features and general profiles as the 8000, but reflects a 2 7/8" frame depth for applications in which this may be required or preferred. The design and versatility of Champion's 8000/8000N Window Wall System makes it the perfect choice for new construction and retro-fit applications desiring maximum glass and vision areas.



~Quality Products and Service Since 1952~

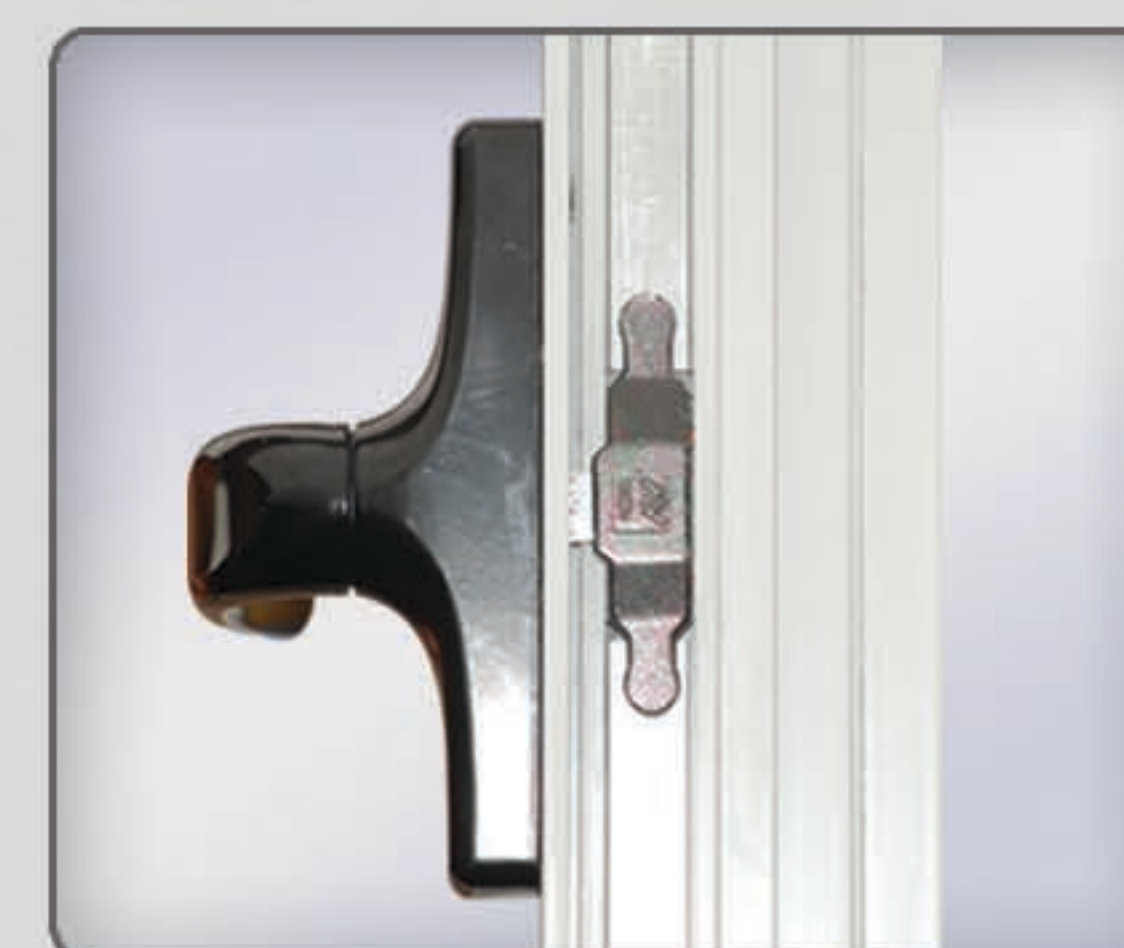
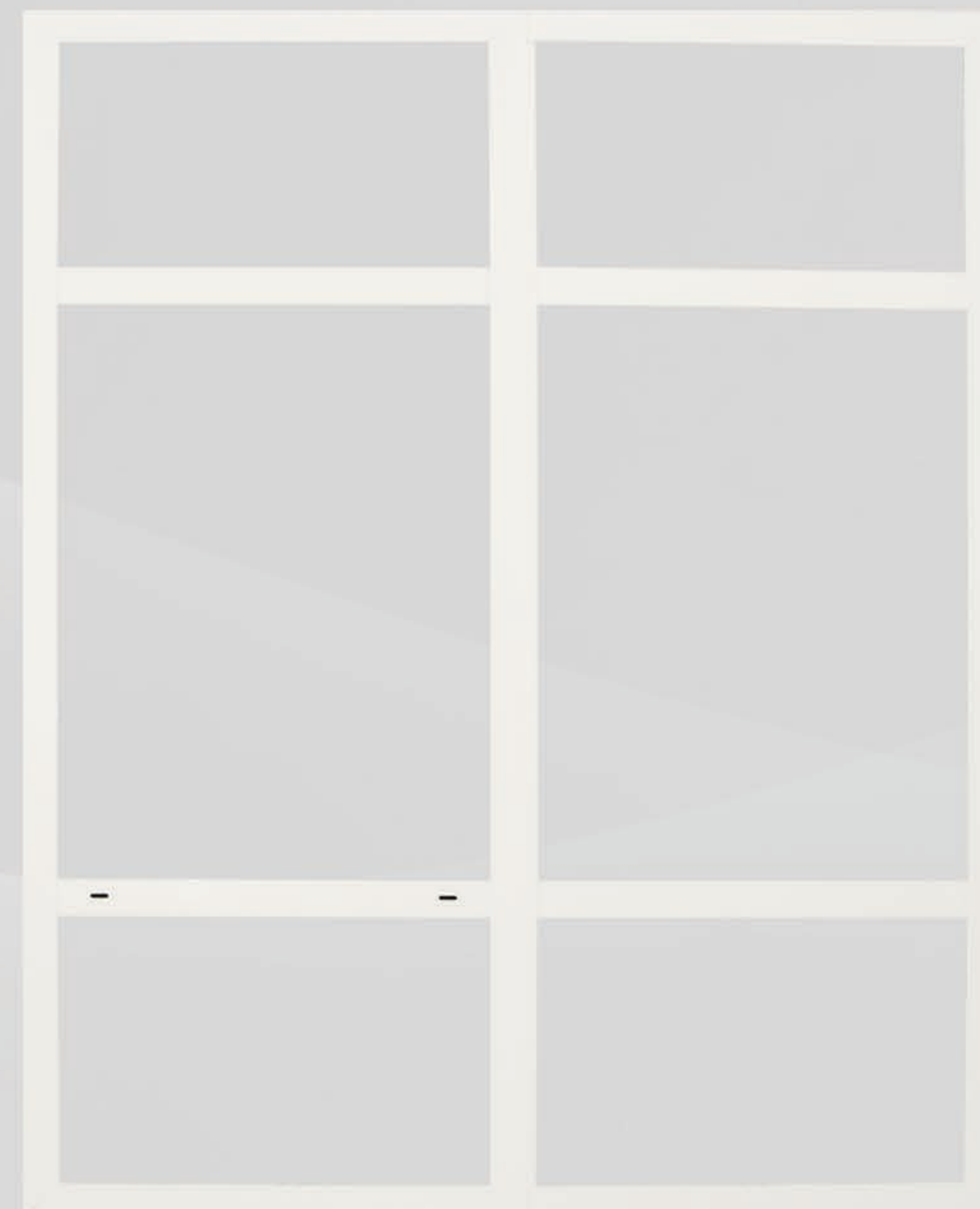
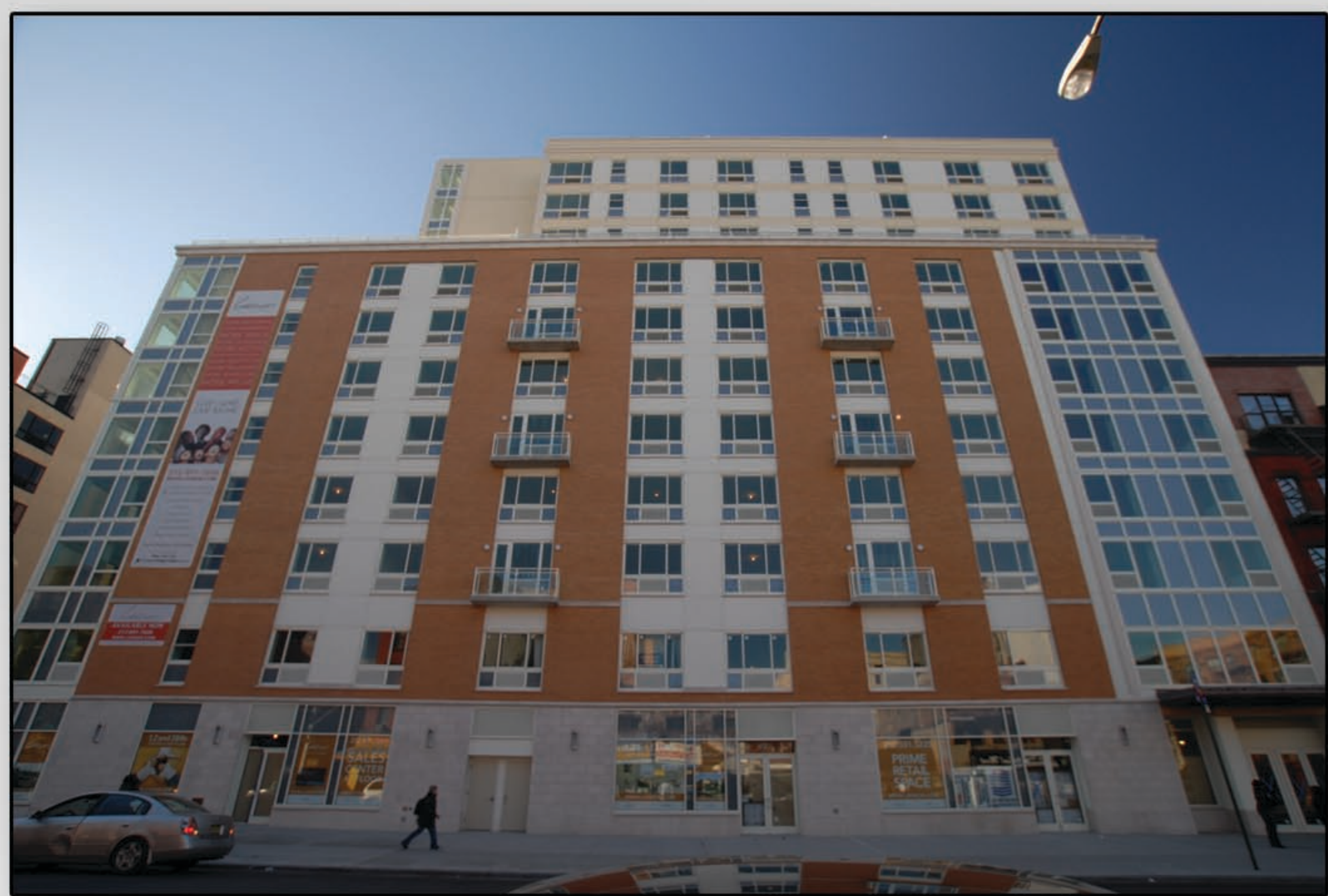


8000 Features

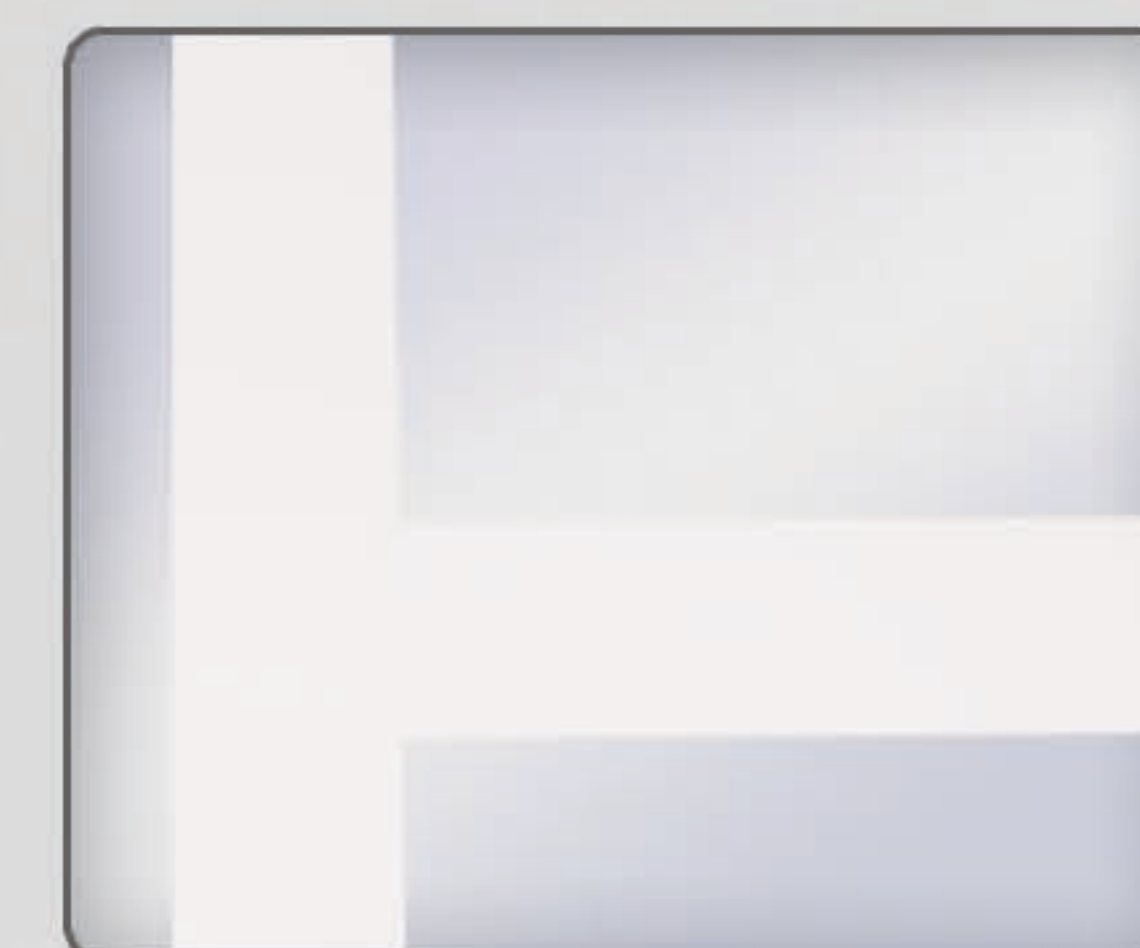
Casement-In/Hopper Units	Structurally Glazed Sashes
4 1/2" Frame Depth (8000)	Pressure-Equalized Design
2 7/8" Frame Depth (8000N)	Euro-Groove Hardware
1" Insulating Glass	Multi-Point Lock
1/8" Cut Size on W & H	Minimum Size: 18" x 18"
3 7/8" Equal Sightlines	Maximum Size: 60" x 114"
I-Strut Thermal Break	

8000 Options

Male-Female Mullion	Slab-to-Slab Receptor System
4 3/4" Sightlines with Mullion	Structural Steel Inserts



Euro-Groove
Handle/Lock



Equal Sightlines

8000 Performance

Champion's 8000 Window Wall is AAMA certified, and has met all testing requirements in accordance with A440-05 standards. The 8000 operable unit passed testing for C-HC70 and C-AW70 ratings (36" x 120" test size). Champion's 8010 Fixed Window obtained F-HC110 and F-AW110 ratings (60" x 120" test size).

Test	8000 C-HC70	8000 C-AW70	8010 F-AW110
Operating Force	1.5 lbf	1.5 lbf	N/A
Air Infiltration	0.07 cfm/ft ² @ 50 mph	0.08 cfm/ft ² @ 50 mph	0.01 cfm/ft ² @ 50 mph
Water Resistance Test	15.0 psf	15.0 psf	15.0 psf
Uniform Load Deflection Test	70.0 psf	70.0 psf	120.0 psf
Uniform Load Structural Test	105.0 psf	105.0 psf	165.0 psf
Forced Entry Resistance	Grade 10	Grade 10	Grade 40